



# Group 3 (Individuals & Societies)

**Business Management SL**

**Psychology SL/HL**

**Environmental Systems and Societies HL**

- Fulfills both Group 3 and Group 4 requirements (freeing up space for a 6<sup>th</sup> course of your choice)

**Economics SL**

- Offered for 2026

**History SL**

- Tentative for 2026

# Our Status

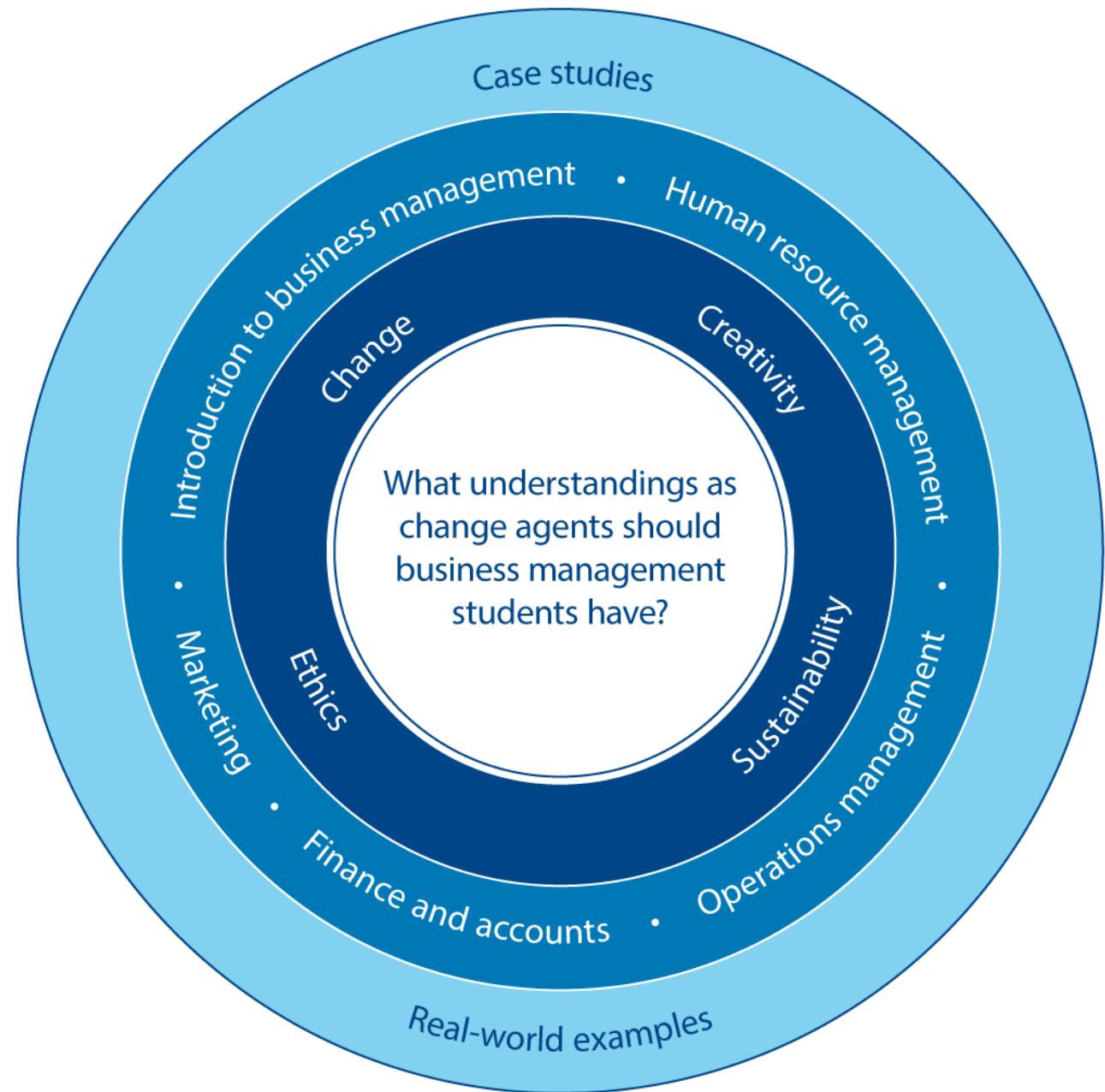
Harrison Trimble High School is a Candidate School\* for the Diploma Programme (DP). This school is pursuing authorization as an IB World School. These are schools that share a common philosophy—a commitment to high quality, challenging, international education that Harrison Trimble believes is important for our students.

\*Only schools authorized by the IB Organization can offer any of its four academic programmes: the Primary Years Programme (PYP), the Middle Years Programme (MYP), the Diploma Programme, or the Career-related Programme (CP). Candidate status gives no guarantee that authorization will be granted. For further information about the IB and its programmes, visit [www.ibo.org](http://www.ibo.org)



# Business Management SL

# Business Management Students







# Example Case Study: Patagonia

- From Unit 1: Business Organization and Environment - Mission, Vision, and Values
- Students would research Patagonia's background, old mission statement (2017), company values, and change pressures
- Students develop a new mission statement that encapsulates the company values
- Compare with new mission (2018)

# Business Management SL at a Glance

- Discover how businesses function in today's global economy — from local startups to multinational giants
- Core Topics:
  - Business Organization & Environment
  - Human Resource Management
  - Finance & Accounts
  - Marketing
  - Operations Management
- Skills You'll Build:
  - Strategic thinking
  - Decision-making
  - Data analysis
  - Ethical reasoning
  - Leadership & communication

# IB Psychology Goals

Develop knowledge and understanding of psychological concepts, content and contexts, as well as the models and theories associated with these areas.

Develop the ability to engage in critical thinking, assess evidence and acknowledge the evolving nature of knowledge.

The goal of the DP psychology course is not to create psychologists, but to promote psychological literacy.







# Course Structure and Core Topics

SL: 150 hours

HL: 240 hours

1. **Biological Approach** – Brain function, genetics, neurotransmitters

2. **Cognitive Approach** – Memory, thinking, decision-making

3. **Sociocultural Approach** – Social identity, cultural influences

Additional **HL** topics

Qualitative Research Methods

Extension of Core Topics





# Research & Assessment

## **Internal Assessment:**

Psychological Experiment (SL & HL)

## **External Assessments:**

Paper 1: Core topics

Paper 2: Options (Abnormal,  
Developmental, Health, HR  
Psychology)

Paper 3 (HL only): Research  
methodology

# Environmental Science & Societies (HL)

## Interdisciplinary Science

Geography, Economics, Social Sciences, among others

## Real-World Application

Global & local environmental challenges



## What You Will Do

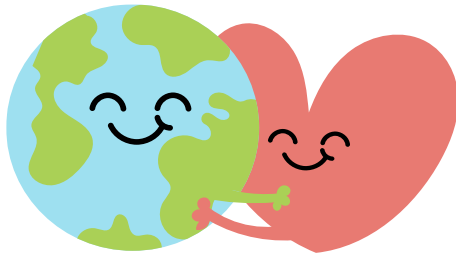
Data analysis, case studies, and fieldwork

## Assessments

Internal Assessment: (Research project)  
+ External Assessment (Papers 1, 2)

## Who Should take ESS?

Science & Sustainability  
Enthusiasts, Problem-Solvers,  
Thinkers, Hands-On Learners



## QUESTIONS?

[michelle.perry@nbed.nb.ca](mailto:michelle.perry@nbed.nb.ca)



# IB Economics SL

IB Economics SL explores fundamental economic concepts, theories, and real-world applications. Students develop analytical and critical thinking skills, enabling them to understand and evaluate economic issues on a local, national, and global scale.

1. **Introduction to Economics** – Basic economic concepts, scarcity, opportunity cost, and economic systems.
2. **Microeconomics** – Demand and supply, market equilibrium, elasticity, market failure, and government intervention.
3. **Macroeconomics** – National income, economic growth, inflation, unemployment, fiscal and monetary policy.
4. **The Global Economy** - Benefits of international trade, trade protection, exchange rates, economic development.

**External Assessments (70%)** – Paper 1 (30%) and Paper 2 (40%)

**Internal Assessment (30%)** – Three commentaries analyzing real-world economic issues

Offered for 2026

Available as a Year 2 (Grade 12)  
SL option.